

Crossland

Realize your Dreams, Across The Lands



Study, Work & Settle Abroad



IELTS



Pearson
PTE Academic

OET



CAEL
CELPPIP



Spoken
English



Study
Abroad



Skilled
Migration



International
Pathway Program

      www.crosslands.in



Awarded for Best Results



Book Exam with us



Everyday Prices with free mock test



Free Fully Computerized Assessment

Check your English level Before Taking

IELTS - PTE - CELPIP



Crossland Offers International Preparation for IELTS, PTE, CAEL, CELPIP, OET, CELBAN and Spoken English along with providing consultation to students for International Education by assisting in Admission, VISA application, Pre and Post Departure services. Crossland is a representative of world's leading Institutions and has association with registered immigration experts.

Lead by Dr. D J Singh, an Edupreneur, International Career & Migration Advisor, he is certified education counselor by EDU CANADA, Think Education New Zealand & ICEF with 23 years of experience in the education sector, He has been associated with many institutions to provide quality education. He has helped more than 5000 students achieve their goals, These students are working with many multinational companies in India, Canada, UK, USA, Australia, New Zealand, UAE and many other countries.



Pearson Test of English (PTE) - Learn from the Test Makers Pearson is the world's largest Educational Company. Pearson is also the publisher of EXPERT books for IELTS, PTE and Key Content Provider to world renowned Institutes and Universities. Crossland is an Exclusive Content Associate of PEARSON English, World's First AI powered English teaching software.



IELTS (International English Language Testing System) is an International standardized test of English language proficiency for non-native English language speakers. It is jointly managed by the British Council, IDP Australia and Cambridge Assessment English. Crossland is a Resource Partner with University of Cambridge. Crossland provides print and Online materials, including study materials, test practice, supplementary grammar and vocabulary book, plus tips and advice on how to avoid common mistakes & Achieve high score.



The Canadian Academic English Language (CAEL) Test is Canada's trusted English language test for study in Canada. This test is designed to assess the English language proficiency of students planning to study in Canadian post-secondary institutions. CAEL is one of the best tools for identifying students with the right English skills for academic success. It provides an authentic representation of language use in a Canadian academic context. Test takers read articles, listen to a lecture, answer questions, and write a short essay, as they would be expected to do in a first-year Canadian university or college classroom



CELPIP - Canadian English Language Proficiency Index Program is a language proficiency test which can make a big difference in your Express Entry Comprehensive Ranking Score (CRS). The CELPIP-General Test assesses functional Listening, Reading, Writing, and Speaking skills, and is accepted by Immigration, Refugees and Citizenship Canada (IRCC) as proof of English language proficiency for permanent residency in Canada. The test provides a valid and reliable evaluation of a test taker's English abilities in a variety of everyday situations, such as communicating with co-workers and superiors in the workplace, interacting with friends, understanding newscasts, and interpreting and responding to written materials.



The Occupational English Test (OET) is to test Healthcare Professionals' English communication abilities. Test takers will need to demonstrate their ability to understand and answer questions about general healthcare consultations and presentations. Test takers are required to write accurate, professional letters with the aid of prompts and use speaking prompts to carry out appropriate and effective conversations with the patients, relating to specific healthcare professions.



CELBAN is a test of language proficiency for internationally educated nurses (IENs) who have completed their nursing education in another country and who speak English as a second language. CELBAN is recognized as proof of language proficiency by all Canadian nursing regulators. CELBAN assesses language abilities in four skill areas.

WHAT WE OFFER



English Test Preparation

IELTS | PTE | CAEL | CELPIP | OET | CELBAN | Spoken

International Career

Study Abroad | Pathway Programs

Migration (PR) | Internships



Download our APP
for Tips & VISA updates



Journey Starts with



COUNTRY WISE ENGLISH REQUIREMENTS FOR VISA

Country	Test	Student VISA After 12th	Student VISA After Bachelor	Skill Migration / PR		
Australia	IELTS -AC	6/5.5/5	6.5/6	IELTS - GT	Trade Person 6 each, Other: 7+	
	PTE	50/43	58/50	PTE	Trade Person 58, Other: 79/65	
Canada	SDS Priority Process	IELTS -AC	6 each	6.5/6	IELTS - GT	EE: 8 L, 7 R S W PNP: 7 L, 6.5 R S W
		CAEL	CLB-5	CLB-6	CELPIP	9 Each / 12
	SPP / Non SDS	IELTS -AC	6/5.5 in one module	6.5/6	Under PNP	
		CAEL	CLB-4	CLB-5	IELTS - GT	7 Listening 6 Reading Speaking Writing
		PTE	53/50	56/50	CELPIP	9 Each / 12
New Zealand	IELTS -AC	6/5.5	6.5/6	IELTS - GT	Trade Person 6 each, Other: 7+	
	PTE	50/43	58/50	PTE	Trade Person 58, Other: 79 /65	
UK	IELTS	5.5	5.5	Not Required		
	PTE	58	58			

OUR UNIQUE APPROACH

We train using international standards and innovative techniques that are adaptive & inspirational with proven results worldwide. We focus on English Development along with Test Preparation. We are the Exclusive Content Associate of PEARSON

- ▶ Blended model of teaching with Digital Technology + Classroom Paper based Test Preparation.
- ▶ Focus on all 7 skills - Grammar, Vocabulary, Pronunciation along with Listening, Reading, Writing and Speaking (L / R / W / S) - vital for IELTS / PTE Preparation.
- ▶ Upto 100% accuracy on Computer Based assignments, continuous assessment and performance feedback. NO human error.
- ▶ Experienced Trainers, certified by Pearson / British Council / IDP.
- ▶ Free complete material with Tips & Strategies for IELTS / PTE Preparation.
- ▶ Accurate Pre & Post (Training) Assessment.
- ▶ Flexible Learning hours.
- ▶ Weekdays & Weekend Batches available.

IELTS - Computer Delivered

- ▶ Best Coaching on exact software along with one to one coaching by trainer.
- ▶ Flexible Learning hours 24x7.
- ▶ Achieve better result than paper based test due to technical features.
- ▶ AI Powered Software with accurate checking

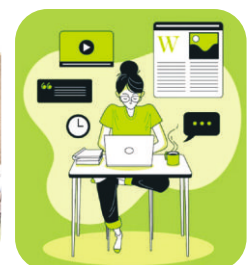
FACILITIES

- ▶ GENIE Book with tips & practice material
- ▶ Student Kit (Notebook / Bag / Stationery)
- ▶ Review Test (after every 5 assignments) and Level Progress Test after completion of each level
- ▶ Mock tests are conducted before you go for actual test
- ▶ Homework: CBT and handouts (vocabulary and grammar worksheets)

SPOKEN ENGLISH CLASSES

Our techniques help you speak correct & fluent English. We develop your skills through CBT which has world class speech analyzer, focusing on right sentence formation based on Grammar, enhancing Vocabulary and Pronunciation through the following :-

- ▶ Group discussion
- ▶ Activity based class
- ▶ Theme based vocab exercises
- ▶ Self assessed speaking practice
- ▶ Homework on software



IELTS™

English for International Opportunity

International English Language Testing System

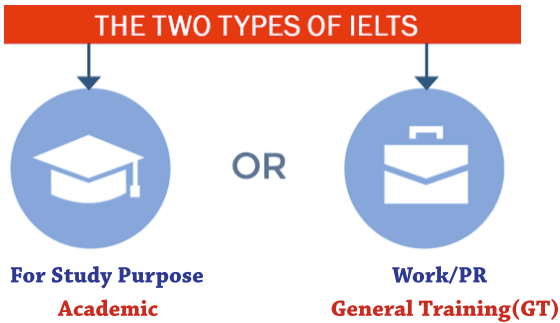
Exam Conducting Bodies:

IDP / BCD (British Council Division)

IMPORTANT INFORMATION

- ▶ Valid Passport is required to book the exam.
- ▶ The exam is valid for 2 years.
- ▶ Students above 16 years of age can appear for the exam.
- ▶ Band Range: 0-9

TYPE OF EXAM



FORMAT OF EXAM



Online Available

READING - 60 minutes	
ACADEMIC	GENERAL
3 Passages	4-5 Passages
40 Questions	40 Questions
3 Sections	3 Sections
Types of Questions: MCQ, Fill ups, Short Answers, headings, match the columns, T/F/NG	

LISTENING - 40 minutes
Types of Questions: MCQ, Fill ups, Short Answers etc.

WRITING- 60 minutes	
Task 1 - 20 minutes	Task 2-40 minutes
AC- Report Writing (Flow chart, pie chart, bar graph, etc)- Min.150 words	ESSAY-Minimum 250 Words
GT- Letter Writing (formal, informal , semi formal)- Min. 150 words	

SPEAKING - 11-14 MINUTES
▶ Introduction (3-5 minutes)
▶ Cue Card (1 minute to prepare and 2 minutes to speak on the topic)
▶ Cross Questioning (3-5 Minutes)

DIFFERENCE / BENEFITS BETWEEN PAPER & COMPUTER		
Feature	Computer Delivered	Paper Based
Exam conduct	Everyday – 3 slots(Morning, Afternoon & Evening)	Weekend / Fortnight for GT
Availability	Book 2 days before	Sometimes difficult for 2 weeks
Speaking Exam	Within 2 days of main paper	Within 7 days of main paper
Result Declaration	Faster within 5 days	14th Day
Listening	<ul style="list-style-type: none"> • Typing only in 2 parts. • Check-box for True/ False ; Yes /No • Highlight text for reference • Less chance of spelling mistake 	<ul style="list-style-type: none"> • Physically write all 40 answers • High risk of mistakes in spelling while transferring answers
Reading	<ul style="list-style-type: none"> • Parallel screen / No shuffling of sheets • No error in spelling mistakes • No Typing of answers; Copy /Paste in fill in the blanks • Highlighter available • Check-box for True/ False ; Yes /No • Drag & Drop type questions • Attempt answers while reading passage 	<ul style="list-style-type: none"> • Shuffling of sheets for finding answers • High chance of errors in spelling while making transfer. • Has to write all answers manually • Time wastage to find answers and to transfer. • No Highlighter Available
Writing	<ul style="list-style-type: none"> • Word count available • Hand writing doesn't matter. • Use of back space, cut/copy/paste allowed can easily edit the essay at any point of time during test. • Highlighter allowed on question & in passage 	<ul style="list-style-type: none"> • Manually count words / wastage of time and distraction. • Hand writing matters a lot. • For any change, erase and rewrite the whole passage/ essay / Wastage of time and concentration. • Can only mark with Pencil.

Notes: _____

PEARSON Test of English

- ▶ World's leading computer based test of English for study abroad and immigration. (One Test)
- ▶ There are 4 modules: Reading, Listening, Writing and Speaking.
- ▶ Duration of test is 2 hours.
- ▶ Results are available in 5 business days.
- ▶ Score Between 1-90.
- ▶ Recognized by thousands of Universities & Colleges worldwide.

READING (29-30 MINUTES)

- ▶ Multiple Choice, choose single answer
- ▶ Multiple choice, choose multiple answers
- ▶ Reorder paragraphs
- ▶ Reading: Fill in the blanks
- ▶ Reading & Writing: Fill in the blanks

LISTENING (30-43 minutes) – It consists of questions based upon audio clips.

- ▶ Summarize spoken text
- ▶ Multiple choice, choose multiple answers
- ▶ Fill in the blanks
- ▶ Highlight correct summary
- ▶ Multiple choice, choose single answer
- ▶ Select missing word
- ▶ Highlight incorrect words
- ▶ Write from dictation

SPEAKING AND WRITING (54-76 MINUTES)

- ▶ Personal introduction
- ▶ Read Aloud
- ▶ Repeat the sentence
- ▶ Describe an image
- ▶ Re-tell lecture
- ▶ Answer short questions
- ▶ Summarize the written text
- ▶ Write essay

SCORE COMPARISON

IELTS Band	PTE Score	CAEL	CELP	OET Grade	OET Score
9.0	90	80-90	12	A	450-500
8.5	85-89		11		
8.0	77-84		10	B	350-440
7.5	67-76		9		
7.0	57-66	70	8	C+	300-340
6.5	47-56	60	7		
6.0	37-46	50	6	C	200-290
5.5	36	40			

Notes: _____

Score Report 1: Sachin Dutta
 Overall Score: 90
 Communicative Skills: Listening (90), Reading (90), Speaking (90), Writing (87)
 Skills Breakdown: Listening 90, Reading 90, Speaking 90, Writing 87, Grammar 88, Oral Fluency 74, Pronunciation 90, Spelling 84, Vocabulary 90, Written Discourse 87
 Test Centre Information: Test Date: 30 Sep 2020, Valid Until: 30 Sep 2022, Report Issue date: 01 Oct 2020, Test Centre Country: India, Test Centre ID: 50405, Test Centre: Pearson Professional Centres-New Delhi, Candidate Information: Date of Birth: 20/08/1988, Country of Citizenship: India, Country of Residence: India, Gender: Male, Email: sachin.dutta@pearson.com, First-Time Test Taker: Yes

Score Report 2: Riddhi
 Overall Score: 81
 Communicative Skills: Listening (85), Reading (70), Speaking (90), Writing (80)
 Skills Breakdown: Listening 85, Reading 70, Speaking 90, Writing 80, Grammar 84, Oral Fluency 90, Pronunciation 90, Spelling 90, Vocabulary 74, Written Discourse 90
 Test Centre Information: Test Date: 11 Nov 2020, Valid Until: 11 Nov 2022, Report Issue date: 11 Nov 2020, Test Centre Country: India, Test Centre ID: 72122, Test Centre: Target Consultancy, Candidate Information: Date of Birth: 05/08/1990, Country of Citizenship: India, Country of Residence: India, Gender: Female, Email: riddhi@target.com, First-Time Test Taker: Yes



CAEL (Computer Edition) is accepted by over 180 academic institutions across Canada. A number of professional associations also recognize CAEL. This test is valid for study in CANADA only.

CAEL (Computer Edition) assesses test takers' English language proficiency in an academic context.

- The test reports scores on four components—Speaking, Reading, Listening, and Writing.
- The total test time is about 3½ hours.

Part 1 :- Speaking (Time 7-10 minutes)

- ▶ Two speaking tasks, each based on a short question
- ▶ One speaking task based on a graph/diagram/chart

Part 2 :- Intergrated Reading (Time 35-50 minutes)

- ▶ One or two short reading passages with comprehension questions
- ▶ One or two long reading passages with comprehension questions
- ▶ One speaking question, answered using material from a long reading passage

Part 3 :- Intergrated Listening (Time 25-35 minutes)

- ▶ One or two short listening passages with comprehension questions
- ▶ One or two long listening passages with comprehension questions
- ▶ One speaking question, answered using material from a long listening passage

Part 4 :- Academic Unit A (Time 60-70 minutes)

- ▶ One long reading passage with comprehension questions
- ▶ One long listening passage on the same topic, with comprehension questions
- ▶ One writing question requiring an extended response, using material from both the long reading passage and the long listening passage

Part 5 :- Academic Unit B (Time 40-45 minutes)

- ▶ One long reading passage with comprehension questions
- ▶ One long listening passage on the same topic, with comprehension questions
- ▶ One writing question requiring a short response, using material from the long reading passage or the long listening passage.

The Canadian English Language Proficiency Index Program (CELPIP) is a general English language proficiency test. The CELPIP-General Test is accepted by IRCC. This test is valid for work & PR in CANADA only.

- The test clearly, accurately, and precisely assesses a test taker's English abilities in a variety of everyday situations, such as communicating with co-workers and superiors in the workplace, interacting with friends, understanding newscasts, and interpreting and responding to written materials.
- The CELPIP-General Test assesses functional Listening, Reading, Writing, and Speaking skills. Test is fully computer delivered, complete all test components in one.
- Computerized tests offer test takers a quick and reliable testing experience.
- The total test time is about 3 hours.

LISTENING (Time allotted: 47-55 minutes)

- ▶ Problem Solving
- ▶ Daily Life Conversation
- ▶ Information
- ▶ News Item
- ▶ Discussion
- ▶ Viewpoints

READING (Time allotted: 55-60 minutes)

- ▶ Correspondence
- ▶ Apply a Diagram
- ▶ Information
- ▶ Viewpoints

WRITING (Time allotted: 53-60 minutes)

- ▶ Writing an Email
- ▶ Responding to Survey Questions

SPEAKING (Time allotted: 15-20 minutes)

- ▶ Giving Advice
- ▶ Talking about a Personal Experience
- ▶ Describing a Scene
- ▶ Making Predictions
- ▶ Comparing and Persuading
- ▶ Dealing with a Difficult Situation
- ▶ Expressing Opinions
- ▶ Describing an Unusual Situation

Notes: _____

OET

The **OET (Occupational English Test)** assesses the English language communication skills of healthcare professionals who wish to practice in an English-speaking environment. The exam is accepted across the majority of regulators, hospitals and universities in the UK, Ireland, Australia, New Zealand, Dubai, Singapore, and Namibia. OET can be taken by healthcare professionals in any of the following **12 professions: Dentistry, Dietetics, Medicine, Nursing, Occupational Therapy, Optometry, Pharmacy, Physiotherapy, Podiatry, Radiography, Speech Pathology and Veterinary Science**. OET tests English language ability in four areas: Listening, Reading, Writing and Speaking.

Section	Time	Tests candidate's ability to
Listening	40 minutes	Listen and understand a range of recordings in healthcare topics from different healthcare centers
Reading	60 minutes	Read and understand various texts on healthcare topics from different healthcare centers
Writing	45 minutes	Write a letter, usually a referral letter using information provided in patient case notes
Speaking	20 minutes	Communicate with a patient in real life context through the use of role-plays



CELBAN is a test of language proficiency for **internationally educated nurses (IENs)** who have completed their nursing education in another country and who speak English as a second language. It is valid in CANADA only. It was developed in 2004 by the Centre for Canadian Language Benchmarks (CCLB) in consultation with members of the nursing community from regulatory bodies, associations, unions, nursing refresher programs as well as IENs. It was designed to ease the nursing shortage in Canada by providing access to the pool of IENs who arrived in Canada but encountered obstacles to obtaining employment, such as: Recognition of international credentials. CELBAN is recognized as proof of language proficiency by all Canadian nursing regulators. CELBAN assesses language abilities in four skill areas: • Speaking • Writing • Listening • Reading

CELBAN consists of two parts:

- The Speaking Test is conducted as a 20-30 minute interview with two trained assessors.
- The Writing, Listening and Reading assessments take place in a group setting, referred to as the Group Test. The Group Test takes 3 hours, with a short break in the middle.

Speaking test	Group Test		
Speaking	Writing	Listening	Reading
Answer questions to demonstrate your ability to narrate, describe, compare, explain, discuss, state and support an opinion. Engage in role plays to ask questions to obtain information, give instructions and information and offer advice. 20-30 minutes	Write a narrative to describe the details of an incident report. Write a few paragraphs explaining whether you agree or disagree with a position on a health related topic. 45 minutes	Answer a series of multiple-choice questions based on video scenarios that include shift reports and conversations between nurses and their colleagues, patients and families. Complete charts by filling in the information that you hear. 60 minutes	Answer a series of multiple-choice questions based on charts, patient notes, manuals and short articles related to health issues. Read a passage with missing words and fill in the blanks. 60 minutes

Notes: _____



Student VISA

You have
PASSPORT
We assist for
VISA
www.crosslands.in

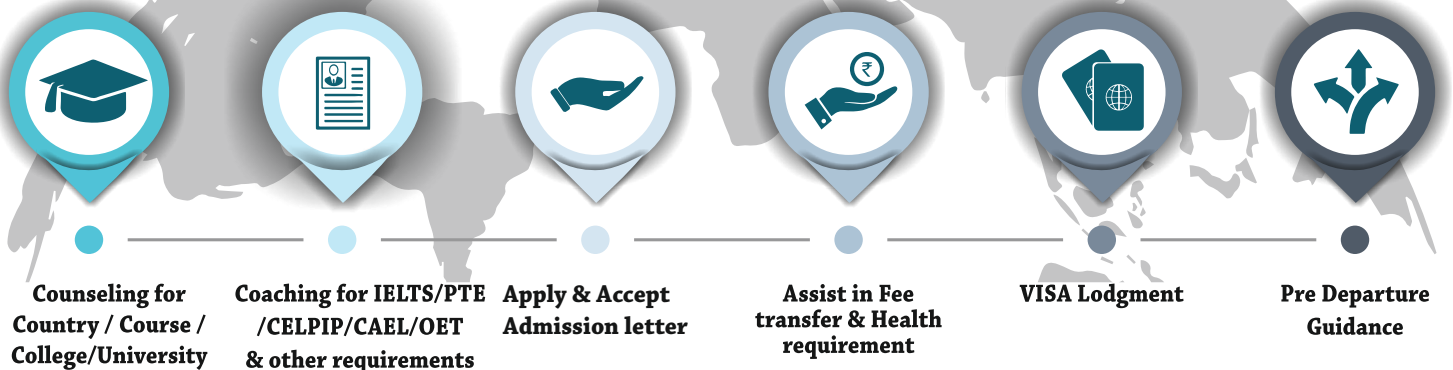
Australia Canada Europe Singapore New Zealand UK USA



PREFERRED COURSES

- 📖 **Accounting / Finance**
- 🎓 **Culinary / Events / Hospitality / Tourism**
- 📺 **Advertising / Media**
- 🎓 **Education / Humanities / Language**
- 🌱 **Agriculture / Horticulture**
- 👨‍🔧 **Engineering / Environmental Science**
- 🎨 **Animation / Graphics / Indl. Design**
- 🏆 **Events / Sports**
- 💄 **Beauty / Fashion Design**
- 🏥 **Health / Nursing / Medical Science**
- 📊 **Business / Project / Management**
- ⚖️ **Legal / Forensic Science / Criminology and many more...**

CROSSLAND SERVICES



Australia



UNIVERSITIES & INSTITUTIONS

CANBERRA

- Australian National University
- University of Canberra

NORTHERN TERRITORY

- Charles Darwin University

NEW SOUTH WALES

- University of Newcastle
- Macquarie University
- Australian Catholic University
- Charles Sturt University
- University of Sydney
- University of New South Wales
- Torrens University Australia
- Western Sydney University
- University of Wollongong

QUEENSLAND

- Bond University
- CQUniversity
- Griffith University
- James Cook University
- Queensland University of Technology
- University of Queensland
- University of Sunshine Coast
- Central Queensland University
- TAFE Queensland
- TAFE Brisbane

SOUTH AUSTRALIA

- TAFE South Australia
- University of South Australia
- University of Adelaide
- Flinders University
- Torrens University
- Southern Cross University

TASMANIA

- University of Tasmania

VICTORIA

- University of Melbourne
- University of Victoria
- University of Ballarat
- Monash University
- Deakin University
- Griffith University
- La Trobe University
- Federation University
- Swinburne University of Technology
- RMIT University
- TAFE Vic./ Melbourne Poly.

WESTERN AUSTRALIA

- Curtin University
 - Edith Cowan University
 - Murdoch University
 - The University of Western Australia
 - TAFE Western Australia
- and Many more...**

Study & Settle Info

Intake: March | July | Oct

Course Duration & Fee Range:

- **Diploma:** 2 year, Fee Range 12000-18000 AUD Per Year
- **Bachelor:** 3-4 year, Fee Range 15000-36000 AUD Per Year
- **Master:** 1-2 year, Fee Range 26000-36000 AUD Per Year

English Language Requirements:

- **IELTS-AC:** UG 6.0-5.5 PG: 6.5/6
- **PTE:** UG 50/43 PG: 54/50

Scholarships: SAT / GRE required

Financial Req.: Approx. 20-30 lacs Old Funds(3 to 4 Months).
Depending upon course & level of education

Work Opportunities:

- 20 hrs per week while studying.
- Upto 3 year open work permit after completion of education.

Gap in Education: Not more than 2 year after 12th
5 year after graduation

Spouse & Child VISA: Allowed with Additional funds
Spouse should be Graduate

PR Possibility: Good Chances after completing study and work
Experience.

Student Accommodation: Available from Universities and
colleges or Rented / Shared Accommodation.

Other Benefits:

- Similar Weather to India.
- Good Minimum Wage & Social benefits
- Pay Half Year Fee

Documents Required:

Passport, Education Docs (School admit card or backlog letter from college), IELTS/PTE/CAEL, Gap Justification Fund Details

Apply Conditional Offer letter (Application Fees)

Transfer Tuition Fees (One Semester) + Fund Details + Medical + Insurance.

Get GTE

E VISA Application

VISA Approval

Notes:



Canada

Study & Settle Info

Intake: January / May / September / Monthly

Course Duration & Fee Range:

- **Diploma:** 2 year, Fee Range 10000-18000 CAD Per Year
- **Bachelor:** 3-4year, Fee Range 15000-32000 CAD Per Year
- **PG Diploma:** 2-4 Terms (8 to 16 Months) Fee Range 12000-18000 CAD Per Year
- **Master:** 2 years, Fee Range 16000-36000 CAD Per Year

English Language Requirements: (Minimum)

Tests	SDS	Non-SDS
IELTS	6+ each	6/5.5 in one module
CAEL	CLB 5+	CLB 4
PTE	Not Acceptable	56/50

Scholarships: SAT / GRE required

Work Opportunities:

- 20 hrs per week while studying.

Study Duration	PSWR Duration
Min. 8 months	8 months
1 years	1 years
2 years	3 years

PR Possibility: Good Chances after completing study and work Experience.

Gap in Education: Acceptable with Justification

Student Accommodation: Available from Universities and colleges or Rented / Shared Accommodation.

Living Cost: GIC 10200 CAD (200 Bank Charges) No Old Funds.

Spouse & Child VISA: Allowed with Additional Funds.

Other Benefits:

- Low tuition fees between 8 to 10 Lacs
- Living cost pay upfront called GIC (\$10200) (so now old Funds)
- Can apply for minimum 8 months program
- Refused VISA can reapply if they fulfill criteria
- No Interview
- Refusal Cases can apply.

Documents Required:

Passport, Education Docs (School admit card or backlog letter from college), IELTS/PTE/CAEL, Gap Justification, Fund Details.

Apply Offer letter (Application Fees)

Pay 1 Year Tuition Fee + Pay GIC (\$10200)
+ Medical +235 CAD Embassy Fee

VISA Application / Bio Metric

VISA Approval + Passport Labeling

Notes:

UNIVERSITIES & INSTITUTIONS

Alberta

- Bow Valley College
- Concordia University
- College of Alberta
- Lakeland College
- Mac Ewan University
- Medicine Hat College
- Nor Quest College
- University of Alberta
- University of Calgary
- Univ. of Lethbridge

British Columbia

- Adler University
- Brighton College
- College of New Caledonia
- College of Rockies
- Columbia College
- Dorset College
- Douglas College
- Farleigh Dickinson University
- Gracestone College
- Kwantlen Polytechnic
- Langara College
- Northern Lights College
- North Island College
- Okanagan College
- Royal Roads Univ.
- Selkirk College
- Simon Fraser Univ.
- Steinberg College
- Tamwood College
- The University of British Columbia
- Thompson Rivers Univ.
- Trinity Western Univ.
- Univ. Of Fraser Valley
- Vancouver College
- Vancouver Ireland University
- Winston College

Manitoba

- Brandon University

- Bow Valley College
- The University of Manitoba
- The University of Winnipeg
- Red River College

New Brunswick

- St. Thomas University
- Univ. of New Brunswick

Nova Scotia

- Acadia University
- Cape Breton University
- Dalhousie University
- Mount Saint Vincent University
- Nova Scotia Agricultural College
- Nova Scotia College of Art and Design
- Saint Mary's University

Newfoundland

- Memorial University of Newfoundland

Ontario

- Algoma University
- Algonquin College
- Brescia University
- Brock University
- Cambrian College
- Canadian College of Higher Studies
- Canadore College
- Carleton University
- Centennial College
- Conestoga College
- Confederation College
- Durham College
- Fanshawe College
- Fleming College
- George Brown College
- Georgian College
- Humber College
- King's Univ. College
- Lakehead University
- Loyalist College
- Mohawk College

- Niagara College
- Northern College
- Ryerson Polytechnic
- Sault College
- Seneca College
- Sheridan College
- St. Clair College
- St. Lawrence College

- Tamwood College
- Trent University
- University of Guelph
- University of Sudbury
- University of Trinity College
- University of Waterloo
- University of Western Ontario
- University of Windsor
- Wilfrid Laurier Univ.
- York University
- Yorkville University

Prince Edward Island

- University of Prince Edward Island

Quebec

- Bishop's University
- College Herzing
- Concordia University
- La Salle College
- Matrix College
- University Laval

Saskatchewan

- Campion College
- Luther College
- Parkland College
- Saskatchewan Polytechnic
- The Univ. of Regina
- University of Saskatchewan

and many more...

United Kingdom



UNIVERSITIES & INSTITUTIONS

- Aberystwyth University
- Anglia Ruskin University
- Aston University
- Bangor University
- Birkbeck University of London
- Brighton and Sussex
- Brunel University London
- City, University of London
- University of Kent
- Durham University
- Heriot-Watt University
- Hult University
- Imperial College London
- King's College London
- Lancaster University
- London School of Economics and Political Science
- Loughborough University
- Newcastle University
- Queen Mary University of London
- Richmond University
- Royal Holloway University of London
- Swansea University
- The University of Edinburgh
- The University of Exeter
- The University of Manchester
- University College London
- University of Aberdeen
- University of Bath
- University of Birmingham
- University of Bristol
- University of Cambridge
- University of Dundee
- University of East Anglia
- University of Essex
- University of Glasgow
- University of Leeds
- University of Leicester
- University of Liverpool
- Cardiff University
- University of Nottingham
- University of Oxford
- University of Reading
- University of Sheffield
- University of Southampton
- University of St Andrews
- University of Stirling
- University of Surrey
- University of Sussex
- University of Warwick
- University of York
- Wolverhampton University
- University of West London
- University of East London
- University of Sunderland
- University of Law
- Leeds Beckett University
- Coventry University
- and many more...**

Study & Settle Info

Intake: May / September / January

Course Duration & Fee Range:

- **Bachelor:** 3-4 year, Fee Range 9000-14000 Pound
- **Master:** 1-2 year, Fee Range 12000-18000 Pound

English Language Requirements:

- **Mark in English:** 65% in 12th class
- **IELTS-AC:** UG / PG: 5.5 each
- **PTE:** UG/ PG: 56

Scholarships: SAT / GRE required

Work Opportunities:

- 20 hrs per week while studying.
- Upto 2 year open work permit after completion of education.

Gap in Education : Acceptable for 3-4 Years

Spouse & Child VISA: Allowed only in Master Program with Additional Funds.

PR Possibility : Good Chances after completing study and work Experience.

Student Accommodation: Available from Universities and colleges or Rented / Shared Accommodation

Financial Req.: Approx. 20 lacs (One Month Old)

Other Benefits:

- Good Minimum Wage & Social benefits
- Pay Half Year Fee
- Refused VISA can reapply if they fulfill criteria.

Documents Required:

Passport, Education Docs (School admit card or backlog letter from college), IELTS/PTE/CAEL, Gap Justification. Funds Details

Apply Conditional offer letter (Application Fees)

College Fee/Tuition Fees One Semester (Receipt) + Funds (Min. 28 Days Old) + Medical + Insurance

Get CAS Letter

VISA Application + Bio Metric + Interview (Optional)

VISA Approval

Notes:

USA



Study & Settle Info

Intake: September/January/May /Multiple intake a year.

Course Duration & Fee Range:

- **Diploma/Associate Degree:** 2-3 year, Fee Range 8000-14000 USD
- **Bachelor:** 3-4 year, Fee Range 9000-14000 USD
- **Master:** 1-2 year, Fee Range 10000-16000 USD

English Language Requirements:

- **IELTS-AC / PTE:** With Preferred / Without Accepted
- **Embassy Interview**

Scholarships: SAT / GRE / GMAT required

Work Opportunities:

- 20 hrs per week while studying.
- Upto 3 year open work permit after completion of education.
- Get VISA upto 5 years.

Gap in Education: Acceptable for 3-4 Year

Spouse & Child VISA: Allowed with Additional Funds.

PR Possibility : Good Chances after completing study and work Experience.

Student Accommodation: Available from Universities and colleges or Rented / Shared Accommodation

Living Cost: Approx. 20lacs 3 to 4 Month Old

Other Benefits:

- Good Minimum Wage & Social benefits
- Pay Half Year Fee, Balance after VISA Approval
- Refused VISA can reapply if they fulfill criteria.
- Spouse can get work permit.

UNIVERSITIES & INSTITUTIONS

- Arizona State University
 - Boston University
 - Brown University
 - Butte Community College
 - California Institute of Technology (Caltech)
 - Carnegie Mellon University
 - Case Western Reserve University
 - Chemeketa Community College
 - Columbia University
 - Cornell University
 - Dartmouth College
 - Duke University
 - Edmonds Community College
 - Emory University
 - Fulton Montgomery Community College
 - Georgia Institute of Technology
 - Harvard University
 - Heartland Community College
 - Johns Hopkins University
 - Lincoln University California
 - Massachusetts Institute of Technology (MIT)
 - Michigan State University
 - New York University
 - Northwestern University
 - Pennsylvania State University
 - Princeton University
 - Purdue University
 - Rice University
 - Stanford University
 - Texas A&M University
 - The Ohio State University
 - University of California, Berkeley (UCB)
 - University of California, Davis
 - University of California, Irvine
 - University of California, Los Angeles (UCLA)
 - University of California, San Diego (UCSD)
 - University of California, Santa Barbara (UCSB)
 - University of Chicago
 - University of Colorado Boulder
 - University of Florida
 - University of Illinois at Urbana-Champaign
 - University of Maryland, College Park
 - University of Michigan
 - University of Minnesota
 - University of North Carolina, Chapel Hill
 - University of Pennsylvania
 - University of Pittsburgh
 - University of Rochester
 - University of Southern California
 - University of Texas at Austin
 - University of Virginia
 - University of Washington
 - University of Wisconsin-Madison
 - Vanderbilt University
 - Washington University in St. Louis
 - Wichita State University
 - Yale University
- and Many more...**

Documents Required:

Passport, Education Docs (School admit card or backlog letter from college), IELTS/PTE, Gap Justification, GRE / SAT / GMAT

Apply Offer letter (Application Fees)

Pay SEVIS fee - Medical - Insurance - Get I20

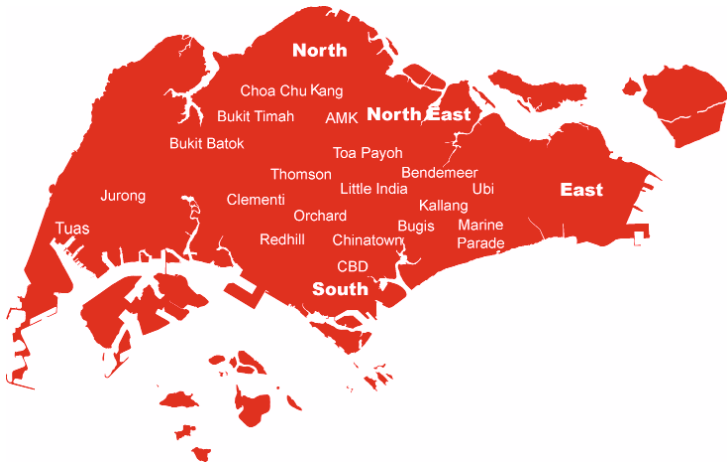
VISA Application - Embassy Interview

VISA Approval

Pay College Fee & Travel

Notes:

Singapore



UNIVERSITIES & INSTITUTIONS

- American Centre of Education
- Amity Global Business School,
- Auston Institute of Management
- Beacon International College
- Boston Business School
- Cornell-Nanyang Institute of Hospitality Management
- Curtin University of Technology
- Dimensions International College
- Embry-Riddle Aeronautical University
- Informatics Academy
- James Cook University
- LASALLE College of the Arts
- Management Development Institute of Singapore
- Melior International College
- Nanyang Polytechnic
- PSB Academy
- School of Hospitality & Resorts Management (SHRM)
- Shelton College International
- Singapore Hotel And Tourism Education Centre (SHATEC)
- S P Jain School of Global Management
- SSA Global
- St. Gallen Institute of Management in Asia
- Stansfield College
- Tourism Management Institute of Singapore (TMIS)
- Yale-NUS College

and Many more...

Study & Settle Info

Intake: Multiple / Monthly

Course Duration & Fee Range:

- **Diploma:** 1 year, Fee Range 6000-8000 SGD
6 Month Study + 6 month Paid Internship
- **Advance Diploma:** 2 year, Fee Range 6000-8000 SGD
- **Bachelor:** 3 year, Fee Range 9000-14000 Pound
- **PG Diploma:** 1 year, Fee Range 6000-8000 SGD
- **Master:** 2 year, Fee Range 8000 -12000 SGD

English Language Requirements:

- **IELTS-AC / PTE:** Not Required / Preferred

Work Opportunities:

- Easy to Get Job offer after Completion of education.

Gap in Education: Acceptable for 3-4 Years

Spouse & Child VISA: Not allowed on study VISA

Student Accommodation: Available from Universities and colleges or Rented / Shared Accommodation

Living Cost: Approx. 20000 to 30000/-INR Per. Month

Other Benefits:

- Good Minimum Wage & Social benefits
- Pay Fee after VISA
- Refused VISA can reapply if they fulfill criteria.
- No Interview
- Get offer letter in 3 working days

Documents Required:

Passport, Education Docs , Gap Justification. Funds Details

Apply Conditional offer letter (Application Fees)

VISA Application + Medical + Insurance

VISA Approval + Bio Metric + Interview (Optional)

Transfer College Fee/Tuition Fees One Semester (Receipt)

Notes:

New Zealand



UNIVERSITIES & INSTITUTIONS

AUCKLAND

- Aspire-2 International
- Auckland Institute of Studies
- Otago Polytechnic
- Auckland Institute of Studies
- Manukau Institute of Technology
- Unitec Institute of Technology
- University of Auckland
- Auckland University of Technology
- Franklin Institute of Tech.

HAMILTON

- University of Waikato
- New Plymouth
- Pacific Institute of Hotel Management
- NELSON
- Nelson Marlborough Institute of Technology

NAPIER/HASTINGS

- Eastern Institute of Technology

ROTORUA

- Toi Ohomai Institute of Tech.

WHANGAREI

- NorthTec
- Waiariki
- University of Waikato

WELLINGTON

- Wellington Institute of Technology

- Victoria University of Wellington
- Whitireia New Zealand
- Open Polytechnic of New Zealand

DUNEDIN

- University of Otago

INVERCARGILL

- Southern Institute of Technology

CHRISTCHURCH

- University of Canterbury
- Ara Institute of Canterbury
- Lincoln University

and Many more...

Study & Settle Info

Intake: June-July / Sept- Oct / Jan - Feb.

Course Duration & Fee Range:

- **Diploma:** 2 year, Fee Range 18000-22000 NZD Per Year
- **Bachelor:** 3-4 year, Fee Range 18000-26000 NZD Per Year
- **Master:** 1-2 year, Fee Range 22000-30000 NZD Per Year

English Language Requirements:

- **IELTS-AC:** UG 6.0-5.5 PG: 6.5/6
- **PTE:** UG 50/43 PG: 58/50

Work Opportunities:

- 20 hrs per week while studying.
- Upto 3 year open work permit after completion of education.

Gap in Education: Acceptable for 2-4 Year

Spouse & Child VISA: Allowed with Additional Funds. For PG student spouse gets work permit also.

PR Possibility: Good Chances after completing study and work Experience.

Student Accommodation: Available from Universities and colleges or Rented / Shared Accommodation.

Financial req.: Approx. 25 lacs.(Old Funds 3 to 4 Months.)

Other Benefits:

- Similar Weather to India.
- Good Minimum Wage & Social benefits
- Pay Half Year Fee
- Refused VISA can reapply if they fulfill criteria

Documents Required:

Passport, Education Docs (School admit card or backlog letter from college), IELTS/PTE, Gap Justification Fund Details

Apply Conditional Offer letter (Application Fees)

Fund Details + Medical + Insurance.

VISA Application & Interview

VISA Approval

Notes:

France



UNIVERSITIES & INSTITUTIONS

- Ecole Des Mines De Nantes
- EPITA Graduate School of Computer Science
- ESC Bretagne Brest
- IGS
- ISC Paris School of Management
- ISEP Paris
- Normandy Business School
- Schiller International University
- SKEMA Business School

Germany



UNIVERSITIES & INSTITUTIONS

- Euro Asia Institute
- Fachhochschule Aachen - Freshman Institute
- Gisma Business School
- Harz University of Applied Sciences
- Hochschule Bremen university of Applied Sciences
- Karlshochschule - International University
- Kuhne Logistics University
- Macromedia University for Media and Communication
- Nova Education Center Berlin
- Porto Business School
- University of Applied Sciences Bad Honnef
- University of Applied Sciences Neubrandenburg
- University of Applied Sciences Nordhausen
- University of Applied Sciences Schmalkalden



Cyprus



UNIVERSITIES & COLLEGES

- Atlantis College
- Bahcesehir Cyprus University (BAU)
- Cyprus University of Technology
- European University Cyprus
- Frederick University
- Larnaca College Cyprus
- University of Cyprus
- University of Mediterranean Karpasia
- University of Nicosia



Austria



UNIVERSITIES & COLLEGES

- Danube University Krems
- Graz University of Technology
- MODUL University Vienna
- University of Applied Arts Vienna
- Vienna University of Economics and Business
- Vienna University of Technology



World Renowned Qualification's Now In India

↕ Global Program

Start your education in **INDIA**
with option to Transfer in
21 Countries / 300+ Top Ranked Institutions



Australia

Year 1 in India get HN Certificate
Year 2 & 3 Complete Bachelor in Australia
Eligible for 3 Year Post Study Work
SAVE Upto 8 Lacs
Transfer options in 19 Universities



Canada

Year 1 in India + Year 2 in Canada get Diploma
Year 1 & 2 in India Get Diploma +
Year 3 in Canada get Bachelor
Eligible for 3 Year Post Study Work
SAVE Upto 8 Lac
Transfer options in 28 colleges & Universities



United Kingdom (UK)

Year 1 & 2 in India get Diploma
Year 3 & 4 Complete Bachelor in UK
Eligible for 2 Year Post Study Work
SAVE Upto 15 Lacs
Transfer options in 108 Universities



United States of America(US)

Year 1 & 2 in India get Diploma
Year 3 & 4 Complete Bachelor in US
Eligible for 3 Year Post Study Work
SAVE Upto 20 Lacs
Transfer options in 89 Universities

**Program's; Business | Computing | Culinary Arts | Hospitality | Graphic Design
Interior | Fashion Design | Early Education | Health Sc. & Administration**



Benefits of a Pathway Program

- ▶ **Better VISA Success:** Academic Performance | Gap in Education | Refusal | NIOS/State Board | No Math | Improve IELTS/PTE | Low marks
- ▶ **Attain Skills:** before you land in new country (Get better jobs)
- ▶ **International Education:** Learn from day one. Develop your thinking ability
- ▶ **Save Money:** Upto 20 Lacs While studying in India
- ▶ **Save Time:** Start education while you prepare for IELTS/PTE & other Documents.





International Internship

Australia / China / Dubai / Germany / Mauritius /
Malaysia / Singapore / Thailand

Australia



New Zealand



Dubai



Kuwait

England



New Zealand

England



New Zealand



China



America



Canada



Singapore



Dubai





Permanent Residency (PR)

AUSTRALIA

- ▶ Skilled Independent
- ▶ Skilled Nominated / Regional
- ▶ Internship / Graduate Skill
- ▶ Global Talent Program

CANADA

- ▶ Express Entry
- ▶ QUEBEC Skilled Worker
- ▶ PNP / A I P P / RNIP
- ▶ Entrepreneurship

Point Based System

- ▶ Age
- ▶ Qualification
- ▶ Experience / Profession
- ▶ English Proficiency
- ▶ Adaptability

Professions in Demand

- ▶ Health Care
- ▶ Medical, Nurse
- ▶ Pharmacist
- ▶ Dentist
- ▶ Research & Development
- ▶ Architects
- ▶ Engineers
- ▶ Environmental
- ▶ Designer
- ▶ System Analysts
- ▶ Accountant
- ▶ Legal
- ▶ Business
- ▶ Sales / H R, Insurance
- ▶ Banking
- ▶ Chef/Cook
- ▶ Hospitality Professionals
- ▶ Community & Social Work Services
- ▶ Child Care
- ▶ Education & Training
- ▶ Arts, Public Relations
- ▶ Agriculture
- ▶ Horticulture
- ▶ Veterinarian
- ▶ Electrician
- ▶ Plumber
- ▶ Carpenter
- ▶ Refrigeration Mechanic
- ▶ Motor Mechanic & More..

Crossland Services

- ▶ FREE Eligibility Check
- ▶ Coaching for IELTS | PTE | CELPIP
- ▶ Assessment (Education & Work Reference)
- ▶ VISA Lodgment
- ▶ Final Documentation
- ▶ Pre Departure Preparation

**Let us help you to make the Change
for a better life across the Lands..
Settle with your Family in
Australia / Canada**





CANADA

MAKE YOUR DREAM HAPPEN

CANADIAN Government Offers Permanent Resident (PR) to

Child Care Giver (NANNY)

Benefits of Program

- Scheme for 5 years (2019-2024)
- Get 2 years of Work Permit + PR
- Spouse & Family Migration
- Earn 18-30 CAD per hr.
- Work anywhere in CANADA

Eligibility

Age: Minimum 18 yrs.

Education: Minimum 10+2 with
One year Diploma in Child Care Giver

IELTS: Minimum 5 bands each in GT

Job offer: Required from Canadian PR/Citizen family



Crossland Services

Course: One year Diploma in Child Care Giver

IELTS Coaching

Job Search: Canadian PR/Citizen family

VISA Application: Include ECA,
Documentation & Interview Preparation

Process

Apply Offer letter (Application Fees)

Job Search / Employment Letter

VISA Application / Approval



International Career Options in NURSING/HEALTH SC.

Crossland Services

Career Counseling

IELTS/OET/PTE Coaching

Job Search

VISA Application (Include ECA,

Documentation & Interview Prepration)



Eligibility	Career Options
Class 12th with Math & English Proficiency equal to IELTS 7 Bands	Study VISA : Diploma / Bachelor in <ul style="list-style-type: none"> • Practical Nursing • Dental Hygiene
Class 12th without Math & IELTS 6 -7 Bands	Study VISA : Diploma / Bachelor in - <ul style="list-style-type: none"> • Health administration • Early child Care / Old Age Care • Kinesiology/Human Kinetics • Gerontology • Mental Health/Neuro Science • Disability • Physiotherapist/Massage Therapist • Acupuncture • Medical Lab Technician • Para Medic • Optometry and more...
GNM with English Proficiency equal to IELTS 6-7 Bands	One year Study / Work (after regulatory exam clearance) <ul style="list-style-type: none"> • Midwifery • Health administration • Para Medic
GNM / Bachelor with English Proficiency equal to IELTS 7 + / OET B+	Study VISA / Work VISA (after regulatory exam clearance): <ul style="list-style-type: none"> • Practical Nursing • Dentist • Health Administration



After GNM: Join One year Diploma and complete your Bsc Nursing with option to register as nurse with IELTS 7 Bands.

After Bsc Nursing: With 3 year+ Experinace & IELTS 7 Bands or equivalent in PTE/OET get Australian PR.



After GNM: Join One year PG Diploma with option to register as nurse with IELTS 7 Bands

After Bsc Nursing: Prepare for IELTS 7 Bands & Clear NCLEX / CRNPE & get Canadian PR.



After GNM/ Bsc Nursing: Achieve IELTS 7 Band/ OET B+. Complete CBT training and get two year work permit with NHS with option for PR.



Associated with:



Our Nearest Centre:

Crossland
www.crosslands.in

Call **+91-9071775577**
WhatsApp: **+91 7087123555**
INDIA Office: Chandigarh
SCO 100, Near Batra Bldg.,
Sector - 17 D -160017.

Download our APP for Tips & VISA updates



International Office: Adelaide | Auckland | Bangkok | Dubai | New Jersey | Singapore | Sydney | Toronto | Vancouver

Review us on